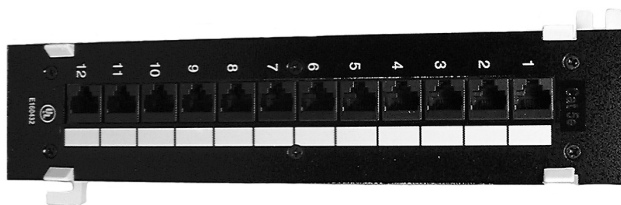


CATEGORY 5 - NETWORKING PRODUCTS

CAT5e Universal 110 Style Patch Panels

These patch panels exceed the EIA/TIA and TSB40A category 5e requirements. They feature enhanced PCB (printed circuit board) design with performance up to 155 MHz. They will accommodate wires from 22-26 AWG, and the jacks handle T568A or T568B wiring format.

- No. 72-5111** - Twelve (12) Port Vertical Mount with Mounting Bracket
- No. 72-5112** - Twelve (12) Port 19" Rack Mountable
Dimensions = 1.75" X 19" (1 RMS)
- No. 72-5124** - Twenty-four (24) Port 19" Rack Mountable
Dimensions = 1.75" X 19" (1 RMS)
- No. 72-5148** - Forty-eight (48) Port 19" Rack Mountable
Dimensions = 3.5" X 19" (2 RMS)
- No. 72-5196** - Ninety-six (96) Port 19" Rack Mountable
Dimensions = 7.0" X 19" (4 RMS)



RMS units are the Rack Mounting System Units. Each unit is 1.75" wide

CAT3 Voice Grade Jacks

These jacks are used to connect Telephone systems, FAX machines and other voice grade equipment to your premise wiring system. They will fit a standard keystone cutout (.58" X .76") which is compatible with AMP, Hubbell, Kron, ICC & others. The Jacks accept 22-26 AWG solid or stranded cable.

6 conductor CAT3 Jacks
(fits 4c & 6c)

- No. 72-3060** 6c Black
- No. 72-3061** 6c Ivory
- No. 72-3069** 6c White



110 TYPE ECONOMY PUNCHDOWN TOOL

A very low cost plastic tool for light use. OK for the casual user.

No. CAT5400



90° CAT5 110 Style Jacks

These jacks are tested and verified to meet the EIA/TIA 568A & B and TSB40A specifications. They are backward compatible to CAT4, & CAT3 equipment. The jacks are constructed to accept 22-26 AWG cable and are of enhanced PCB construction.

- No. 72-5000** 8c Black
- No. 72-5001** 8c Ivory
- No. 72-5009** 8c White



Keystone Jack Shield

The optional shield is used where there is a high noise area and shielded cable (STP) is necessary. The two piece unit snaps around the jack once the cable has been attached and the jack is in location.

No. CAT5110 Metal Shield



180° CAT5e 110 Style Jacks

These keystone jacks are designed for high speed data requirements and meet EIA/TIA 568A & B and TSB40A specifications. They are constructed of UL 94V0 plastic and have 50 micro inches of GOLD on the contacts. With 180° jacks the contacts are at right angle to the front of the jack.

Features
50 Micro Inches GOLD
Uses 110 Style Punch Down Tool
Passes frequencies up to 350 MHz
Accepts 22-26 AWG Solid Cable



- No. 72-5500** 8c Black
- No. 72-5501** 8c Ivory
- No. 72-5509** 8c White

Tool-less CAT5 Jacks

These CAT5 jacks are simple and convenient to install. There is no need for a punch-down tool. The hinged cover (when snapped down) forces the wire into the contact, completing the connection. These jacks are tested and verified to meet the EIA/TIA 568A & B and TSB40A specifications. They are backward compatible to CAT4 & CAT3 equipment. The jacks are constructed to accept 22-26 AWG cable and are of enhanced PCB construction.

- No. 72-5070** 8c Black
- No. 72-5071** 8c Ivory
- No. 72-5079** 8c White



90° CAT5e 110 Style Jacks

These jacks are enhanced CAT5 jacks with a bandwidth of up to 350 MHz. They meet EIA/TIA 568A & B and TSB40A specifications. They are constructed of UL 94V0 plastic and have 50 micro inches of GOLD on the contacts. With 90° jacks the contacts are in-line (horizontal) with the front of the jack. They are backward compatible to CAT4 & CAT3 equipment.

Features
50 Micro Inches GOLD
UL Listed
Uses 110 Punch-down Tool
Accepts 22-26 AWG Solid Cable
No. 72-5580 8c Black
No. 72-5581 8c Ivory
No. 72-5589 8c White

