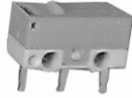


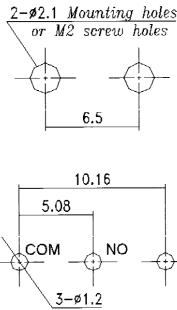
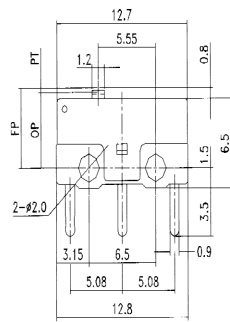
# SWITCHES SNAP ACTION

## MICRO SNAP ACTION SWITCHES

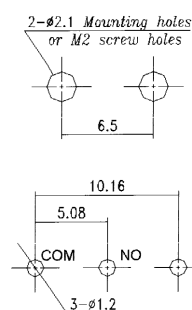
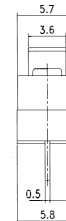
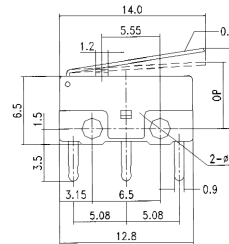
Extremely small (1/2" Long) and light weight, PCB terminal for wave soldering. Suitable for several applications such as small applications, audio, mouse, office equipment etc..



30-2400



30-2401



### SPECIFICATIONS:

Current Rating:	3A @ 125V AC, 1A @ 250V AC
Insulation Resistance:	100 Meg ohm (Min.) @ 500V DC
Dielectric Strength:	1Ac 500V 50/60 Hz for 1 minute
Contact Resistance:	50 Meg Ohm
Electrical Life:	30,000 Cycles
Operating Temperature Range:	-25°C - +85°C

Part No.	OF max	RF min	PT max	OT min	MD max	OP	Actuator
30-2400	150g	20g	0.5 mm	0.25 mm	0.12 mm	5.5 ± 1.5 mm	Pin Plunger
30-2401	80g	5g	0.55 mm	0.55 mm	0.5 mm	6.8 ± 1.5 mm	Short Lever

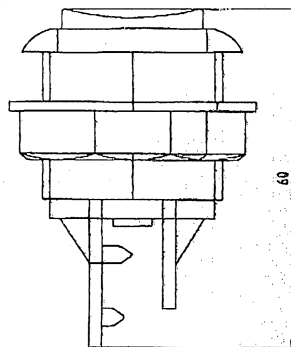
## ACTION PUSH BUTTON SWITCH (MOMENTARY) & SEPARATE PUSH - BUTTON ASSEMBLY

This is a big, rugged switch assembly that was originally designed for video games and computer games, where the action is hard and frequent. The plastic button assembly is designed to accommodate any number of snap action switches; refer to the drawing of Philmore 30-2000 (in catalog) for dimensions. Switches simply snap into place in the separate assembly, or purchase a unit complete with switch.

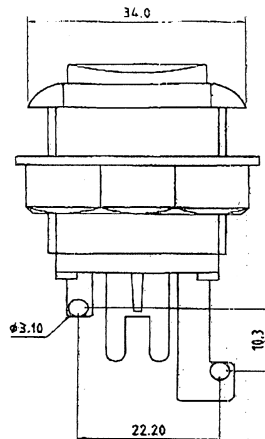
The complete assembly, including switch, is supplied with a miniature snap action MOMENTARY 10 @ 250VAC switch with a very light action; only 75 grams of pressure is required to activate vs, an average of more than 125 grams for most switches of this design. The switch is protected from over - pressure by the push button assembly. Available in six colors, with or without 10 amp switch.

### PUSH BUTTON ASSEMBLY WITHOUT SWITCH

Catalog No.	Color
30-771	RED
30-772	WHITE
30-773	BLUE
30-774	GREEN
30-775	YELLOW
30-776	BLACK



Panel cut - out 1.125"



### PUSH BUTTON ASSEMBLY INCLUDES SWITCH

Catalog No.	Color
30-781	RED
30-782	WHITE
30-783	BLUE
30-784	GREEN
30-785	YELLOW
30-786	BLACK



switch life cycle 100,000 (minimum)