

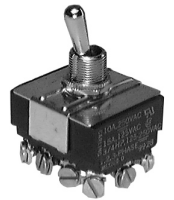
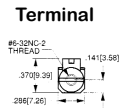
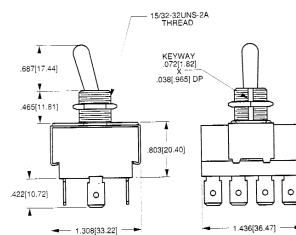
SWITCHES STANDARD TOGGLE

SPECIFICATIONS:

Current Rating:	15A @ 125V AC, 10A @ 250V AC
Insulation Resistance:	100 Meg ohms
Dielectric Strength:	1000V (min.)
Base Material:	Phenolic
Actuator & Bushing Material:	Brass/Nickel Plate
Terminal Type:	Screw (#6-32 NC-2 Thread)

Part No.	Type	Action			Actuator
30-10243	4PDT	ON	OFF	ON	Metal
30-10245	4PST	ON	-	OFF	Metal
30-10376	4PDT	ON	-	ON	Metal

HEAVY DUTY BAT HANDLE TOGGLE SWITCHES - 4PDT



Mounting Hole: 0.500"

LIGHT DUTY BALL HANDLE TOGGLE SWITCH

SPECIFICATIONS:

Current Rating:	6A @ 125V AC, 3A @ 250V AC
Initial Contact Resistance:	50 Meg ohm (Max.)
Insulation Resistance:	100 Meg ohm (Min.) @ 500V DC
Dielectric Strength:	1000V AC 50/60 Hz for 1 minute
Contact Material:	Brass - 6" 18 AWG, 105 C° Wire
Terminal Material:	Brass - Bright Nickel Plate
Terminal Type:	Stripped & Tinned Wire Leads

Part No.	Replaces	Type	Action			Actuator
30-1720	L720	SPST	ON	-	OFF	Metal



Mounting Hole: 0.500"

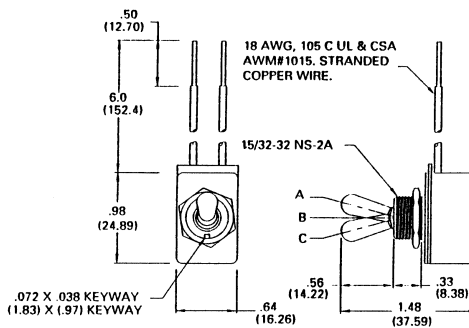


UTILITY BAT HANDLE TOGGLE SWITCH

SPECIFICATIONS:

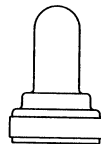
Current Rating:	8A @ 125V AC, 4A @ 250V AC 10A @ 125V AC, 1/3 HP @ 125V AC
Initial Contact Resistance:	50 Meg ohm (Max.)
Insulation Resistance:	100 Meg ohm (Min.) @ 500V DC
Dielectric Strength:	1000V AC 50/60 Hz for 1 minute
Contact Material:	Brass - 6" 18 AWG, 105 C° Wire
Terminal Material:	Brass - Bright Nickel Plate
Terminal Type:	Stripped Wire Leads

Part No.	Type	Action			Actuator
30-350	SPST	ON	-	OFF	Metal

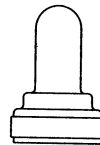


Mounting Hole: 0.500"

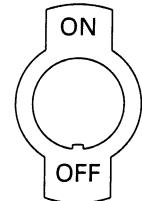
TOGGLE SWITCH HARDWARE



Part No. 30-1320
Replaces No. T320
 Rubber Boot
 Thread Size: 15/32-32



Part No. 30-1200
Replaces No. T200
 Rubber Boot
 Thread Size: M12 x 1.0



Part No. 30-2200B
Replaces No. P200B
 * Available in Bulk only.