

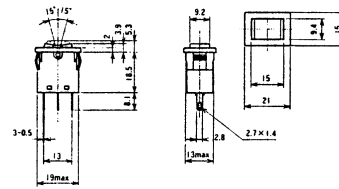
SWITCHES ROCKER

STANDARD ROCKER SWITCHES

SPECIFICATIONS:

| | |
|------------------------------------|-------------------------------|
| Current Rating: | 5A @ 125V AC, 3A @ 250V AC |
| Initial Contact Resistance: | DC 2.5V-1A, 20 Meg ohm (Max.) |
| Insulation Resistance: | 500V DC 100 Meg ohm (Min.) |
| Dielectric Strength: | 1500V AC for 1 minute |
| Contact Material: | Copper - Silver Plate |
| Terminal Material: | Copper - Silver Plate |
| Terminal Type: | Solder |

| Part No. | Replaces | Type | Action | | | Actuator |
|----------|----------|------|--------|-----|----|-------------|
| 30-10086 | 10086 | SPDT | ON | - | ON | Black Nylon |
| 30-10088 | 10088 | SPDT | ON | OFF | ON | BlackNylon |



Mounting Hole:
 0.51" x 0.75" @ .04" Panel Thickness
 0.51" x 0.76" @ .08" Panel Thickness

SPECIFICATIONS:

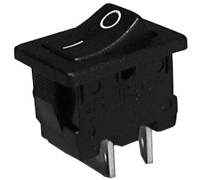
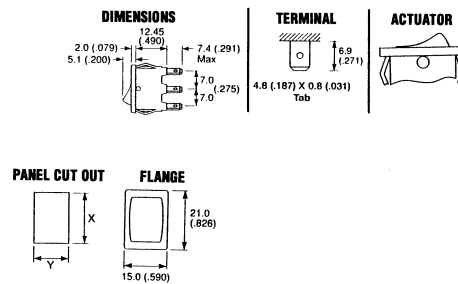
| | | | |
|----------------------------|-----------------------|-----------|---------------|
| ELECTRICAL RATINGS: | | | |
| 10A | 125-250V AC 65C | UL E45221 | CSA LR10990 |
| 1/4HP | 125V AC 1/2HP 250V AC | | UL/CSA |
| 10 (4)A | 250V AC T90 | | VDE 44375 |
| 25A | Inrush | | EN61058-1 |
| 10A | 28V DC | | Approvals N/A |
| MATERIALS: | | | |
| Body: | Nylon 6.6 | | |
| Actuator: | Nylon 6.6 | | |
| Contact Gap: | 3mm (.118) | | |
| Contact Material: | Silver | | |

| Part No. | Type | Action | | | Actuator |
|----------|------|--------|---|-----|-------------|
| 30-860 | SPST | ON | - | OFF | Black Nylon |
| 30-16844 | SPDT | ON | - | ON | Black Nylon |



MINIATURE POWER ROCKER SWITCHES

For applications such as computers, audio, medical, office instrument and appliance products.

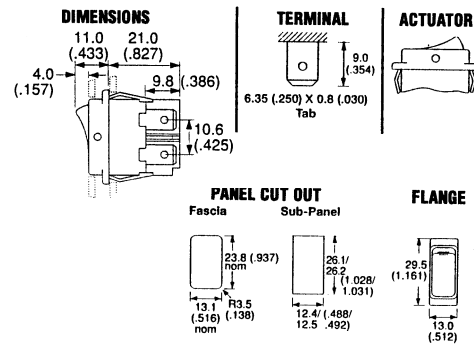


DOUBLE POLE MINIATURE POWER ROCKER SWITCHES

SPECIFICATIONS:

| | | | |
|----------------------------|-----------------|---------------|--|
| ELECTRICAL RATINGS: | | | |
| 16A | 125-250V AC 65C | UL E45221 | |
| 1HP | 30V DC | UL/CSA | |
| 1/2A | 125V AC | UL/CSA | |
| 10A | 125-250V AC 65C | CSA LR10990 | |
| 10 (6)A | 250V AC T100 | VDE 75171 | |
| 75A | Inrush | EN61058-1 | |
| 10A | 28V DC | Approvals N/A | |
| MATERIALS: | | | |
| Body: | Nylon 6.6 | | |
| Actuator: | Nylon 6.6 | | |
| Contact Gap: | 3mm (.118) | | |
| Contact Material: | Silver Alloy | | |

| Part No. | Type | Action | | | Actuator |
|----------|------|--------|---|-----|----------------------------|
| 30-250 | DPST | ON | - | OFF | Black Nylon |
| 30-16705 | DPST | ON | - | OFF | White Nylon w/Black Legend |



SPECIFICATIONS:

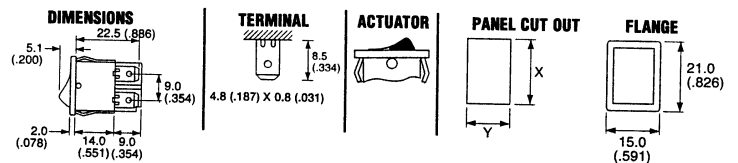
| | | | |
|----------------------------|-------------------------|--------------|--|
| ELECTRICAL RATINGS: | | | |
| 15A | 125-250V AC 65C Non Ind | UL E45221 | |
| 1/4HP | 125V AC 1/2HP 250V AC | UL E45221 | |
| 12A | 125-250V AC | CSA LR10990 | |
| 10 (6)A | 250V AC T125 | VDE 75171 | |
| 75A | Inrush | EN61058-1 | |
| 10A | 28V DC | No Approvals | |
| MATERIALS: | | | |
| Body: | Nylon 6.6 | | |
| Rocker (Opaque): | Nylon 6.6 | | |
| Contact Gap: | 3mm (.118) | | |
| Contact Material: | Silver Alloy | | |

| Part No. | Type | Action | | | Actuator |
|----------|------|--------|---|-----|---------------------|
| 30-850 | SPST | ON | - | OFF | Black Nylon & Red |
| 30-852 | SPST | ON | - | OFF | Black Nylon & Green |
| 30-854 | SPST | ON | - | OFF | Black Nylon & Blue |
| 30-855 | DPST | ON | - | OFF | Black Nylon & White |



MINIATURE ROCKER SWITCHES

Two Color Actuator with Molded in Color Legend.



| PANEL THICKNESS | DIM X | DIM Y |
|--------------------------|--------------------------|--------------------------|
| 0.75-1.25 (.029-.049) | 19.2-19.1 (.756-.752) | 13.0-12.9 (.512-.508) |
| 1.25-2.0 (.049-.079) | 19.4-19.3 (.764-.760) | 13.0-12.9 (.512-.508) |
| 2.0-3.0 (.079-.118) | 19.8-19.7 (.779-.776) | 13.0-12.9 (.512-.508) |



Industry Standard size. Snap in mounting.
 Single and Double Pole. ON OFF Circuits.