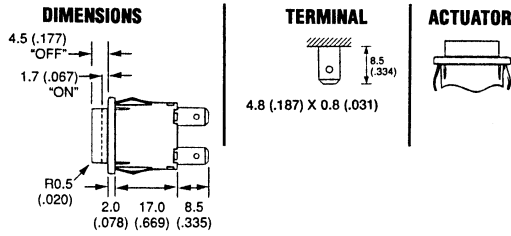
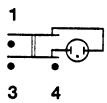


SWITCHES PUSH BUTTON

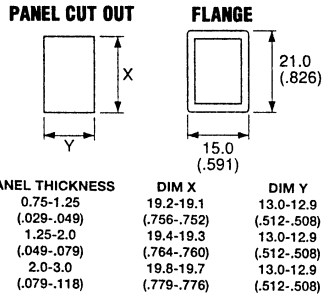
12V LIGHTED MINIATURE PUSH BUTTON SWITCHES



CIRCUIT DIAGRAM



12V AC/DC Incandescent



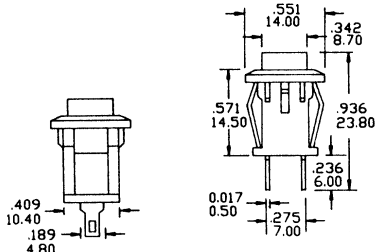
SPECIFICATIONS:

ELECTRICAL RATINGS:			
12A	125-250V AC 85C	UL E45221	
1/2HP	125V AC 1HP 250V AC	UL E45221	
12A	125-250V AC	CSA LR10990	
12 (2)A	250V AC T125	VDE 10032	
6 (6)A	250V AC T105 5E4 (50K Operations)	VDE 10032	
10A	28V DC	No Approvals	
MATERIALS:			
Body:		Nylon 6.6	
Rocker (Opaque):		Nylon 6.6	
Rocker (Lighted):		Polycarbonate	
Contact Gap:		3mm (.118)	
Contact Material:		Silver Alloy	
Part No.	Type	Action	Actuator
30-830	SPST	ON - OFF	Red Lens Button
30-832	SPST	ON - OFF	Green Lens Button
30-836	SPST	ON - OFF	Amber Lens Button

* NOTE: User Note: The light bulb incorporated in this switch must be connected to 12 volts AC or DC and NOT to 125 volts. The 125 volt rating applies to switch contacts, NOT to the light.



SQUARE SNAP-IN PUSH BUTTON SWITCHES



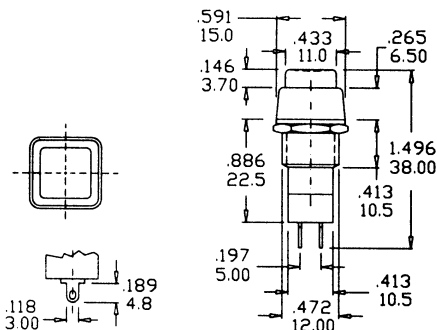
Mounting Hole: 0.43" x 0.50"

SPECIFICATIONS:

Current Rating:	3A @ 125V AC, 1A @ 250V AC			
Initial Contact Resistance:	DC 2.5V-1A, 20 Meg ohm (Max.)			
Insulation Resistance:	500V DC 100 Meg ohm (Min.)			
Dielectric Strength:	1500V AC for 1 Minute			
Contact Material:	Brass - Silver Plate			
Terminal Material:	Brass - Silver Plate			
Terminal Type:	Solder			
Part No.	Replaces	Type	Action	Actuator
30-10068	10068	SPST	OFF - (ON)	Blue Nylon
30-10070	10070	SPST	ON - (OFF)	Red Nylon

NOTE: () = Momentary

SQUARE PUSH BUTTON SWITCHES



Mounting Hole: 0.50"

SPECIFICATIONS:

Current Rating:	3A @ 125V AC, 1A @ 250V AC			
Initial Contact Resistance:	DC 2.5V-1A, 20 Meg ohm (Max.)			
Insulation Resistance:	500V DC 100 Meg ohm (Min.)			
Dielectric Strength:	1500V AC for 1 Minute			
Contact Material:	Brass - Silver Plate			
Terminal Material:	Brass - Silver Plate			
Terminal Type:	Solder			
Part No.	Replaces	Type	Action	Actuator
30-10064	10064	SPST	OFF - (ON)	Red Nylon
30-10066	10066	SPST	OFF - (ON)	Red Nylon

NOTE: () = Momentary