

SWITCHES MINIATURE SNAP ACTION

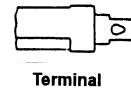
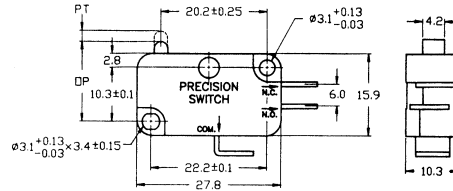
SPECIFICATIONS:

Current Rating:	15A @ 125V/250V AC			
Initial Contact Resistance:	15 Meg ohm (Max.)			
Insulation Resistance:	500V DC 1000 Meg ohm (Min.)			
Dielectric Strength:	1000V AC for 1 Minute			
Contact Material:	Silver			
Terminal Material:	Brass - Silver Plate			
Terminal Type:	.187" Quick Connect			
Part No.	Replaces	Type	Action	Actuator
30-2000	AM2000	SPDT	Snap Action Momentary	Pin Plunger
30-18230*		SPDT	Snap Action Momentary	Pin Plunger

* 30-18230 Rated 10A @ 125V/250VAC with .250" Quick Connect Terminal

SPECIFICATIONS:	
Terminal: Quick Connect	OT Min.: 0.8mm
OF Max.: 230g	MD Max.: 0.15-0.4mm
RF Min.: 56g	OP: 14.7 ± 0.4mm
PT Max.: 1.2mm	

MINIATURE SNAP ACTION SWITCH with PIN PLUNGER

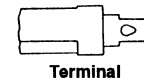
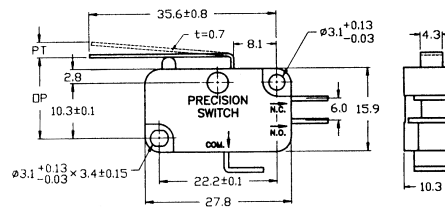


SPECIFICATIONS:

Current Rating:	15A @ 125/250V AC			
Initial Contact Resistance:	15 Meg ohm (Max.)			
Insulation Resistance:	500V DC 1000 Meg ohm (Min.)			
Dielectric Strength:	1000V AC for 1 Minute			
Contact Material:	Silver			
Terminal Material:	Brass - Silver Plate			
Terminal Type:	.187" Quick Connect			
Part No.	Replaces	Type	Action	Actuator
30-2020	AM2020	SPDT	Snap Action Momentary	Lever

SPECIFICATIONS:	
Terminal: Quick Connect	OT Min.: 1.6mm
OF Max.: 115g	MD Max.: 1.2mm
RF Min.: 14g	OP: 15.2 ± 1.2mm
PT Max.: 3.3mm	

MINIATURE SNAP ACTION SWITCH WITH SHORT LEVER



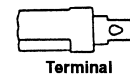
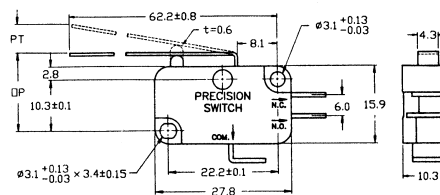
SPECIFICATIONS:

Current Rating:	15A @ 125/250V AC			
Initial Contact Resistance:	15 Meg ohm (Max.)			
Insulation Resistance:	500V DC 1000 Meg ohm (Min.)			
Dielectric Strength:	1000V AC for 1 Minute			
Contact Material:	Silver			
Terminal Material:	Brass - Silver Plate			
Terminal Type:	.187" Quick Connect			
Part No.	Replaces	Type	Action	Actuator
30-2040	AM2040	SPDT	Snap Action Momentary	Long Lever
30-18205*		SPDT	Snap Action Momentary	Long Lever

* 30-18205 Rated 10A @ 125V/250VAC with .250" Quick Connect Terminal

SPECIFICATIONS:	
Terminal: Quick Connect	OT Min.: 3mm
OF Max.: 60g	MD Max.: 2.2mm
RF Min.: 7g	OP: 15.2 ± 2.6mm
PT Max.: 7.6mm	

MINIATURE SNAP ACTION SWITCH with LONG LEVER



SPECIFICATIONS:

Current Rating:	15A @ 125/250V AC			
Initial Contact Resistance:	15 Meg ohm (Max.)			
Insulation Resistance:	500V DC 1000 Meg ohm (Min.)			
Dielectric Strength:	1000V AC for 1 Minute			
Contact Material:	Silver			
Terminal Material:	Brass - Silver Plate			
Terminal Type:	.187" Quick Connect			
Part No.	Replaces	Type	Action	Actuator
30-2060	AM2060	SPDT	Snap Action Momentary	Roller Lever
30-18236*		SPDT	Snap Action Momentary	Roller Lever

* 30-18236 Rated 10A @ 125V/250VAC with .250" Quick Connect Terminal.

SPECIFICATIONS:	
Terminal: Quick Connect	OT Min.: 1.6mm
OF Max.: 115g	MD Max.: 1.2mm
RF Min.: 14g	OP: 20.7 ± 1.2mm
PT Max.: 3.3mm	

MINIATURE SNAP ACTION SWITCH with ROLLER LEVER

