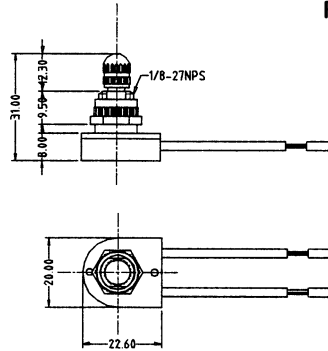


ROTARY CANOPY SWITCH

SPECIFICATIONS:

Current Rating:	6A @ 125V AC, 3A @ 250V AC
Initial Contact Resistance:	DC 2.5V-1A, 20 Meg ohm (Min.)
Insulation Resistance:	500V DC 100 Meg ohm (Min.)
Dielectric Strength:	1500V AC for 1 minute
Contact Material:	Brass - Bright Nickel Plate
Terminal Material:	6" 18 AWG 105 C° Wire
Terminal Type:	Stripped Wire Leads

Part No.	Replaces	Type	Action		Actuator
30-9161	9161	SPST	ON	- OFF	Knurled Metal



Mounting Hole: 0.406"

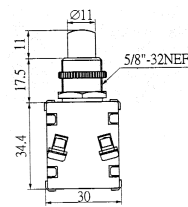


SPECIFICATIONS:

Current Rating:	15A @ 12V DC
Terminal Material:	Brass
Terminal Type:	Screw

Part No.	Type	Action		Actuator
30-19484	SPST	OFF	- (ON)	Brass/Nickel Plate

NOTE: () = Momentary



15A 12V DC



Mounting Hole: .625"

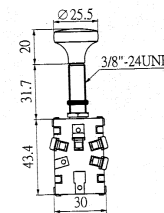
AUTOMOTIVE PUSH BUTTON SWITCH



SPECIFICATIONS:

Current Rating:	30A @ 12V DC
Terminal Material:	Brass
Terminal Type:	Screw

Part No.	Type	Action		Actuator
30-17408	SP3T	OFF	ON ON	Brass/Nickel Plate



30A 12V DC



Mounting Hole: .375"

AUTOMOTIVE PUSH/PULL SWITCH



SURFACE MOUNT PANIC SWITCH

SPECIFICATIONS:

Current Rating:	2A @ 125VAC, 1A @ 250VAC
Mounting Centers:	2.625"
Mounting Hole:	.12"
Dimensions:	.90" W x 3" L x .60"H
Terminal Type:	Screw

Part No.	Type	Action	Actuator
30-17076	SPST	O.N. or N.C. Momentary	Plastic

