

OPEN REED SWITCH



Sizes
Glass Length: 19.5mm
Overall Length: 52mm

SPECIFICATIONS:

Current Rating:	1A @ 200VDC
Power Rating:	10W
Breakdown Voltage:	350V DC
Operating Time (MS):	0.8
Contact Material:	Rhodium
Pull-In Range (AT):	9-60
Terminal Type:	Leads

Part No.	Type	Action			Actuator
30-17152	SPST	ON	-	OFF	Magnet

OPEN REED SWITCH



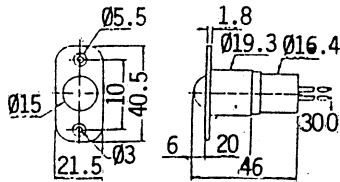
Sizes
Glass Length: 14.5mm
Overall Length: 55mm

SPECIFICATIONS:

Current Rating:	1A @ 150VAC
Power Rating:	20W
Breakdown Voltage:	200V DC
Operating Time (MS):	2.5
Contact Material:	Rhodium
Pull-In Range (AT):	15-30
Terminal Type:	Leads

Part No.	Type	Action	Actuator
30-17154	SPDT	Normally Open or Normally Closed	Magnet

ROLLER BALL SWITCH



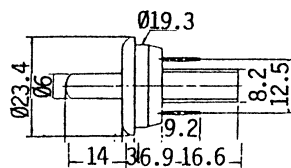
SPECIFICATIONS:

Current Rating:	.2A @ 12VDC
Mounting Centers:	1.16"
Mounting Hole:	.12"
Dimensions:	.85" W x 1.6" L x 1.8"H
Terminal Type:	10" Leads, 24 AWG

Part No.	Type	Action			Actuator
30-17070	SPST	OFF	-	(ON)	Roller Ball

Note: () = Momentary

SNAP-IN TAMPER SWITCH



Mounting Hole: 0.75"

SPECIFICATIONS:

Current Rating:	1A @ 125VAC
Terminal Type:	.250" Quick Connect

Part No.	Type	Action			Actuator
30-17074	SPST	OFF	-	(ON)	Plastic (.55" H.)

Note: () = Momentary