

PANEL LAMPS & LED's

INCANDESCENT PANEL LAMPS

Grain of Wheat Lamps

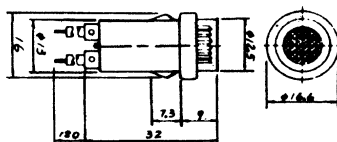
These miniature lamps have many uses. They are used as dial lights in many consumer products. They are available in several voltages with 15 cm wire leads attached.



No. 11-706 6V AC / DC
No. 11-712 12V AC / DC
No. 11-724 24V AC / DC

12V High Flat-Top Indicator

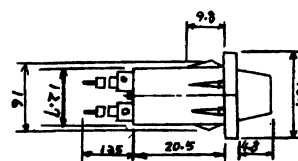
These panel lamps have a 9 mm high X 12.5 mm diameter lens, a 12V lamp, and wire leads. The indicator will operate on AC or DC voltages and snaps into a 14 mm diameter hole.



No. 11-202 Red
No. 11-203 Orange
No. 11-205 Green

Square Snap-in Indicator

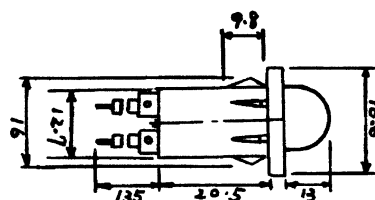
The Indicators have a 16.3 mm square lens and mount into a 14 mm round hole. These have an incandescent lamp and operate at 12V AC / DC with wire leads.



No. 11-242 Red
No. 11-244 Orange
No. 11-245 Green

12V High Dome Indicator

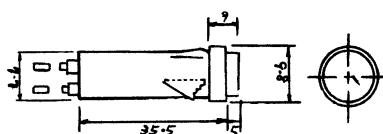
Panel lamps with a 13 mm high X 12.7 mm dome lens, a 12V incandescent lamp, and wire leads. They snap into a 14 mm diameter hole. Lamps work on either AC or DC voltages.



No. 11-222 Red
No. 11-223 Amber
No. 11-225 Green

12V Flat-Top Snap-in Indicator

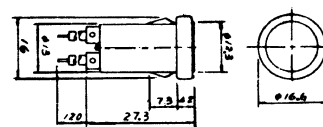
These panel lamps are 8.6 mm in diameter with a 5 mm high flat lens, a 12V incandescent lamp, and wire leads. They mount into a 8 mm hole and will work on either AC or DC voltages.



No. 11-282 Red
No. 11-283 Orange
No. 11-285 Green

12V Flush Snap-in Indicator

These snap-in panel lamps are constructed to operate at 12V AC or DC with wire leads. The lens is flush with the chrome bezel. The mounting hole is 14 mm in diameter.

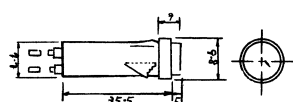


No. 11-212 Red
No. 11-213 Orange
No. 11-215 Green

LED PANEL LAMPS

Miniature Snap-in Indicator

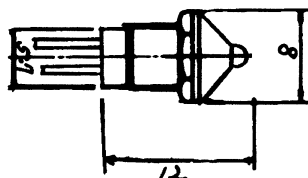
Miniature snap-in panel lamps with a LED lamp and a built-in resistor for 12V DC operation. The device is 8.6 mm in diameter and snaps into a 8 mm hole.



No. 11-382 Red
No. 11-383 Orange
No. 11-385 Green

3 mm LED in Dome Chrome Bezel

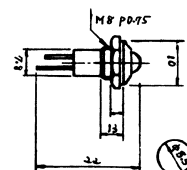
These panel lamps are made to operate on 2V DC and need a resistor for any other voltage. They have a chrome Dome shaped Bezel which hold a 3 mm LED. The lamp mounts into a 6.5 mm mounting hole with a hex nut.



No. 11-362 Red
No. 11-363 Orange
No. 11-365 Green

5 mm LED in Dome Chrome Bezel

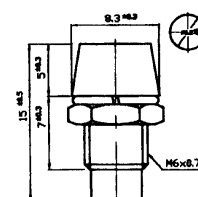
These panel lamps are made to operate on 2V DC and need a resistor for any other voltage. They have a chrome Dome shaped Bezel which hold a 5 mm LED. The lamp mounts into a 8.5 mm mounting hole with a hex nut.



No. 11-372 Red
No. 11-373 Orange
No. 11-375 Green

3 mm LED Lamp Holder

The holders hold a 3 mm LED (T-1). They are a chrome recessed style holder which mounts in a 6.2 mm hole with a hex nut.



No. 11-450